

World Leader in Sophisticated Packaging Systems*RS-WA Random Side Drive Water Activated***series overview**

The BestPack® RS-Water-Activated Series Semi-Automatic Random Tape Carton Sealers are built for sealing randomly sized boxes with water-activated (gummed tape). The low profile (RSL) model allows for lower sealing capabilities.

This machine comes with a pop-out tape head. The two side belts are driven by two electric 110V UL-approved motors. These units are also available in Stainless Steel.

major features

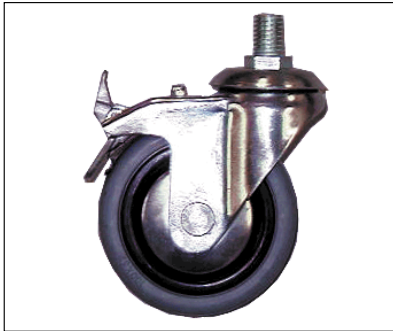
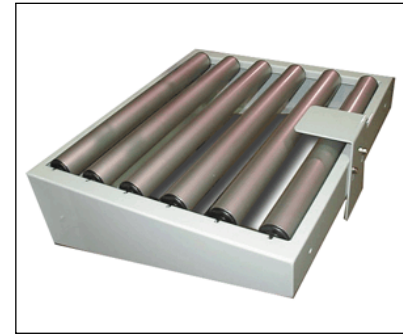
- *Handles random carton sizes*
- *Adjustable Bed Height from 25.5" to 30.0"*
- *2 Side Belts*
- *Low Profile*
- *Tape Roll Lengths: 1000yd, 1500yd, 2000yd.*
- *Heavy Duty Frame*
- *UL Approved Electrical Parts*
- *Rugged Construction*
- *Water-Activated 3" Tape Heads*
- *Height Sensors*

standard features

- *Exclusive Pop-out Water Activated Tapehead*
- *Operation Manual and Spare Parts Kit*
- *3" Tapehead*

World Leader in Sophisticated Packaging Systems**optional features**

- *Motorized Height and/or Width Adjustment*
- *Interlock Safety Gates*
- *Stainless Steel*
- *Low or No Tape Sensor*

**Locking Castors****Infeed/Exit Conveyor w/ Stabilizer****machine & carton specifications**

- *Power Requirements: 110 Volts 60 Hz*
- *Speed: Up to 4 cartons/minute*
- *Tape Head: Standard: 3"*
- *Requires Dry Air*

series comparison table

Model	Machine Size	Carton Range	Cartons/Min.	Shipping Weight (lbs.)
RS22-3WA 3" Tapehead	(56.7") x (35.0") x (79.4")	(7.0" - unlimited) x (5.0" - 20.8") x (7.0" - 20.8")	Up to 4	N/A
RSL22-3WA 3" Tapehead	(67.1") x (35.0") x (79.4")	(4.0" - unlimited) x (5.0" - 20.5") x (4.0" - 20.5")	Up to 4	N/A

* All specifications capable of customization and subject to change without notice